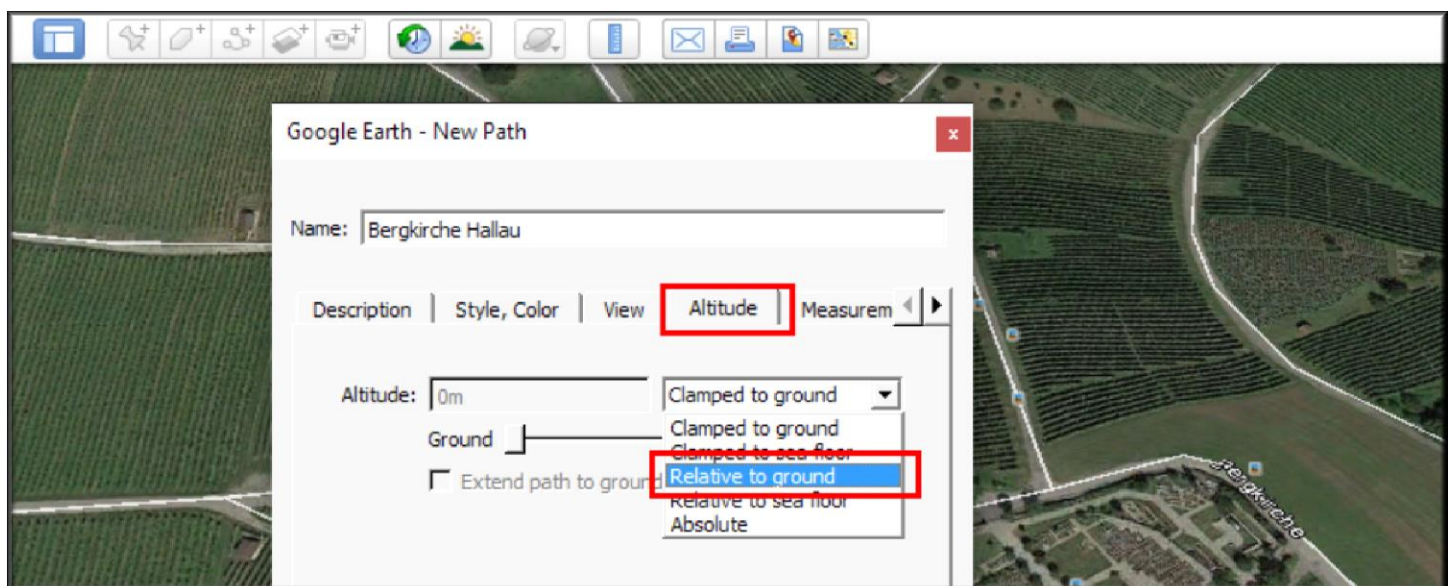
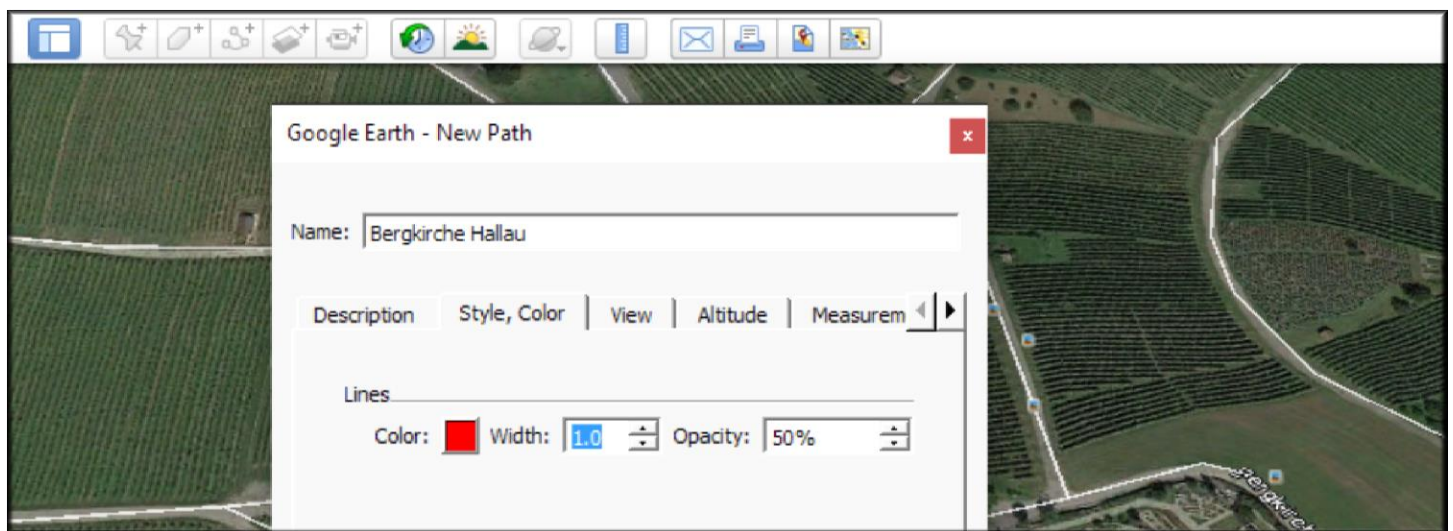
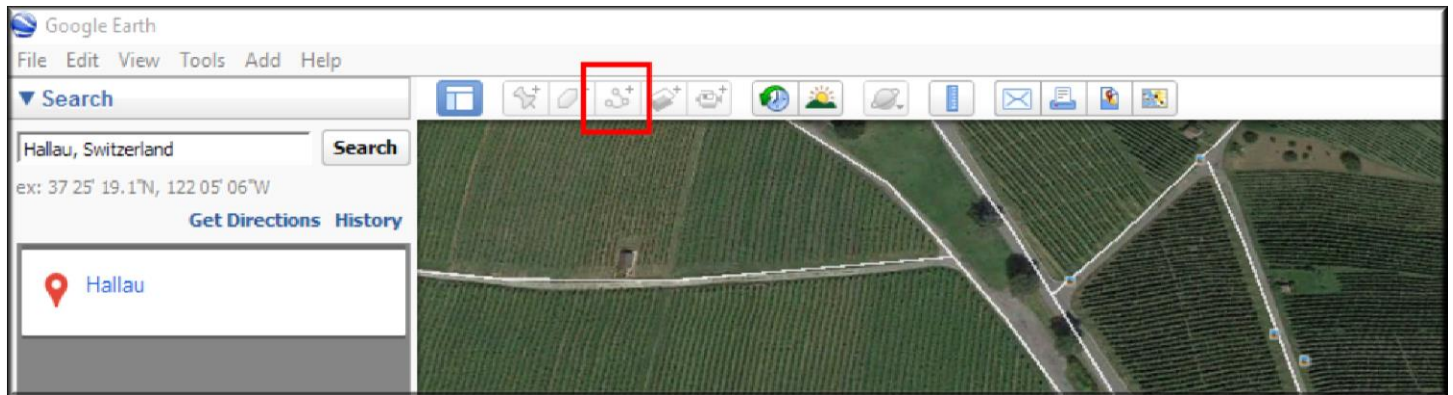
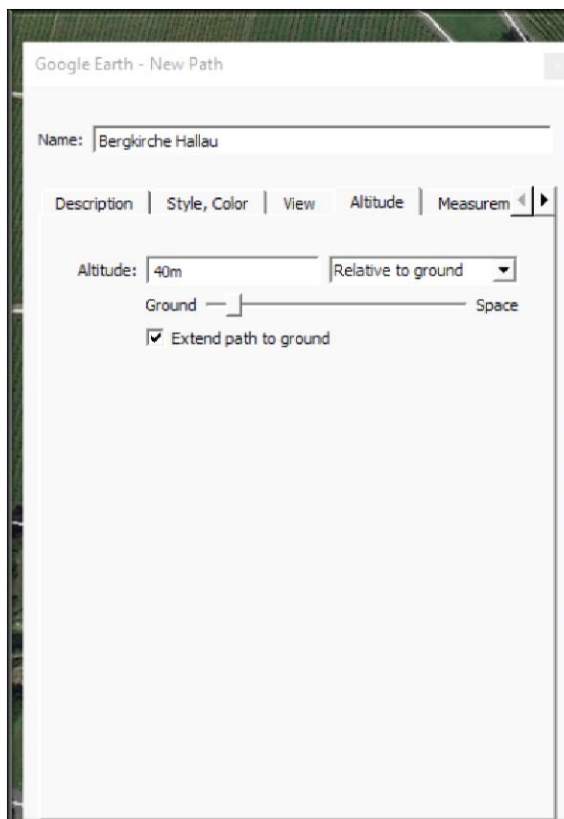
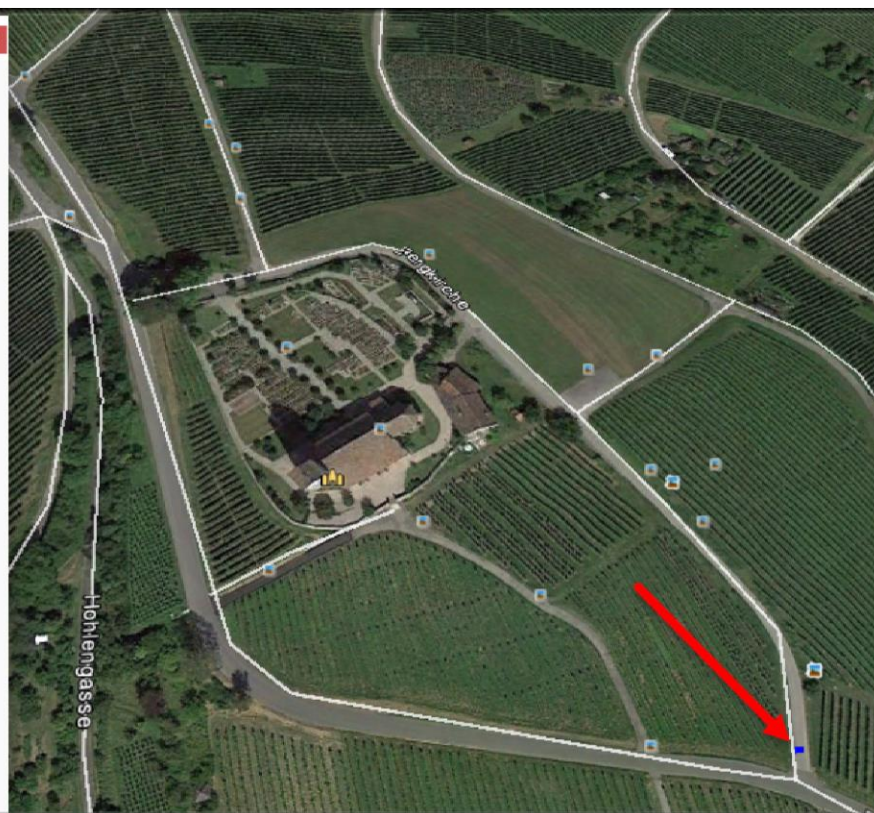
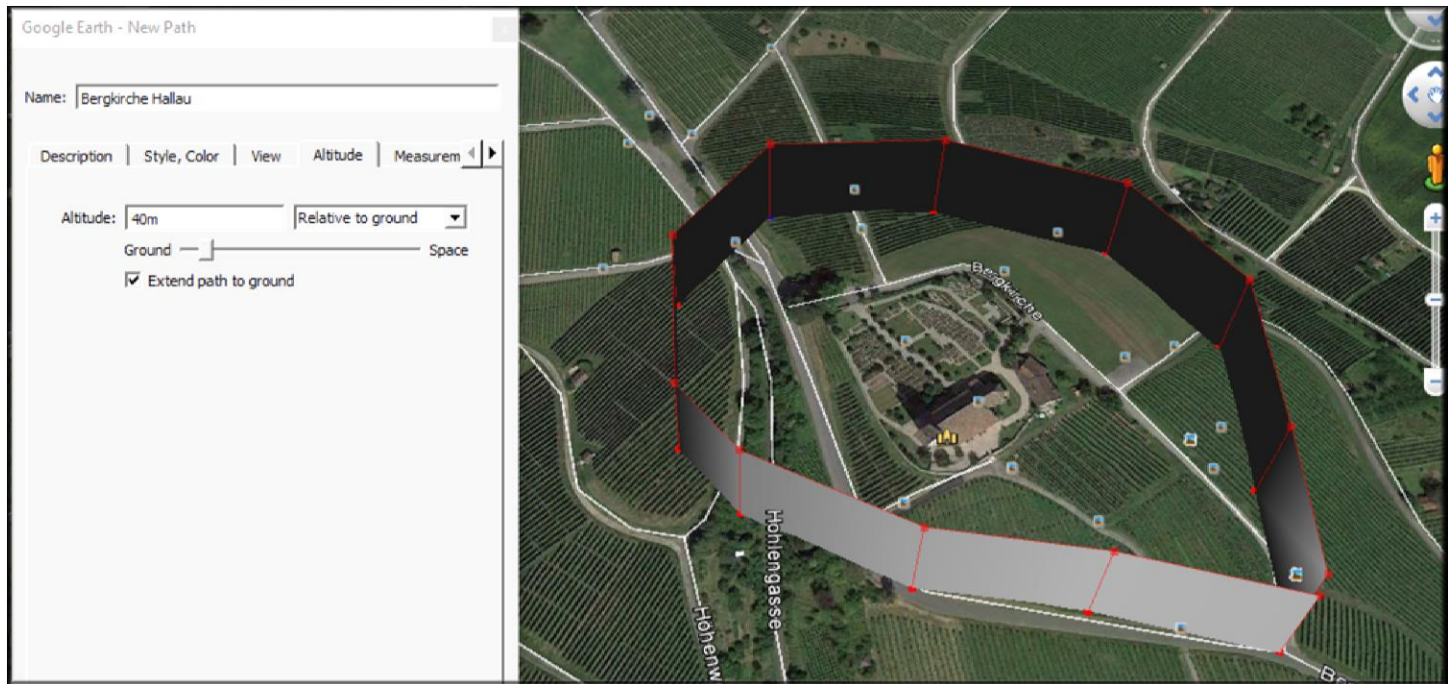


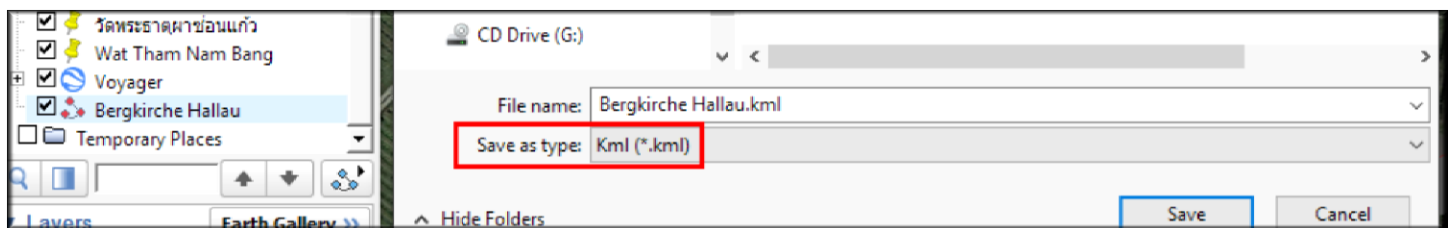
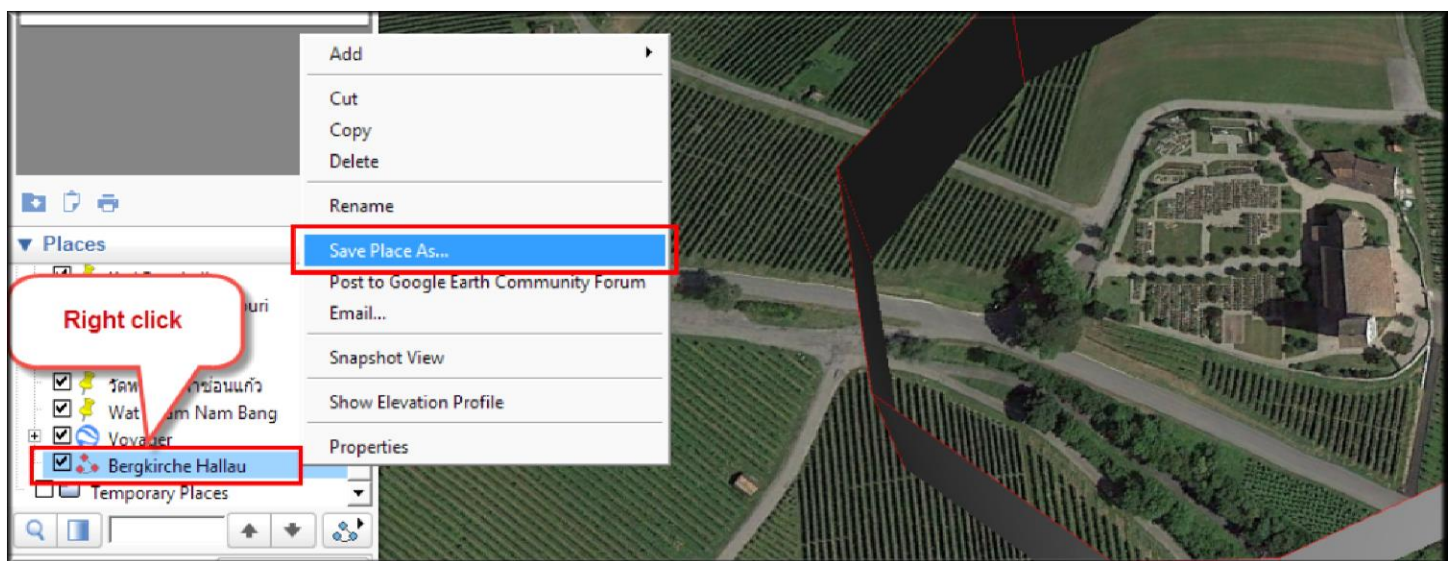
Waypoint mission in Google Earth relative to ground:



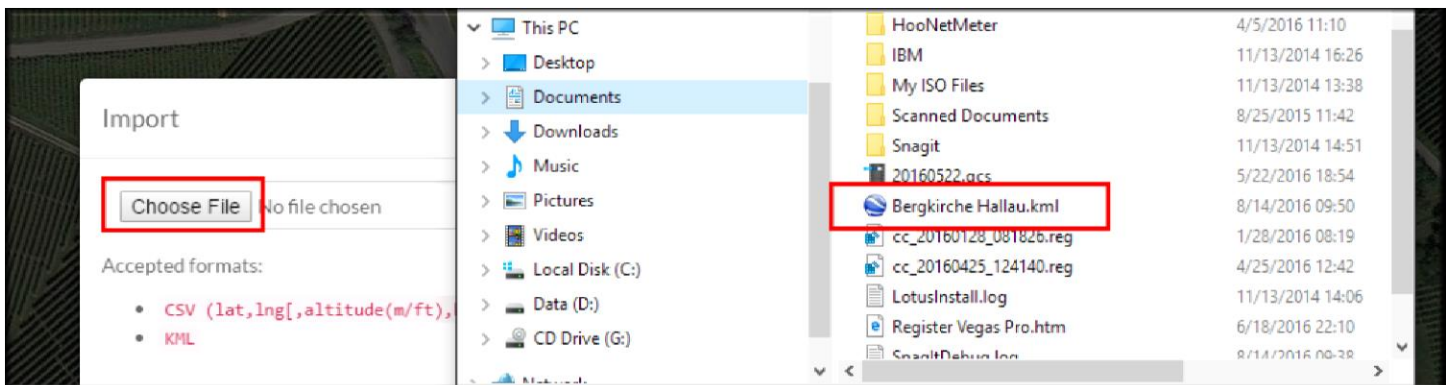
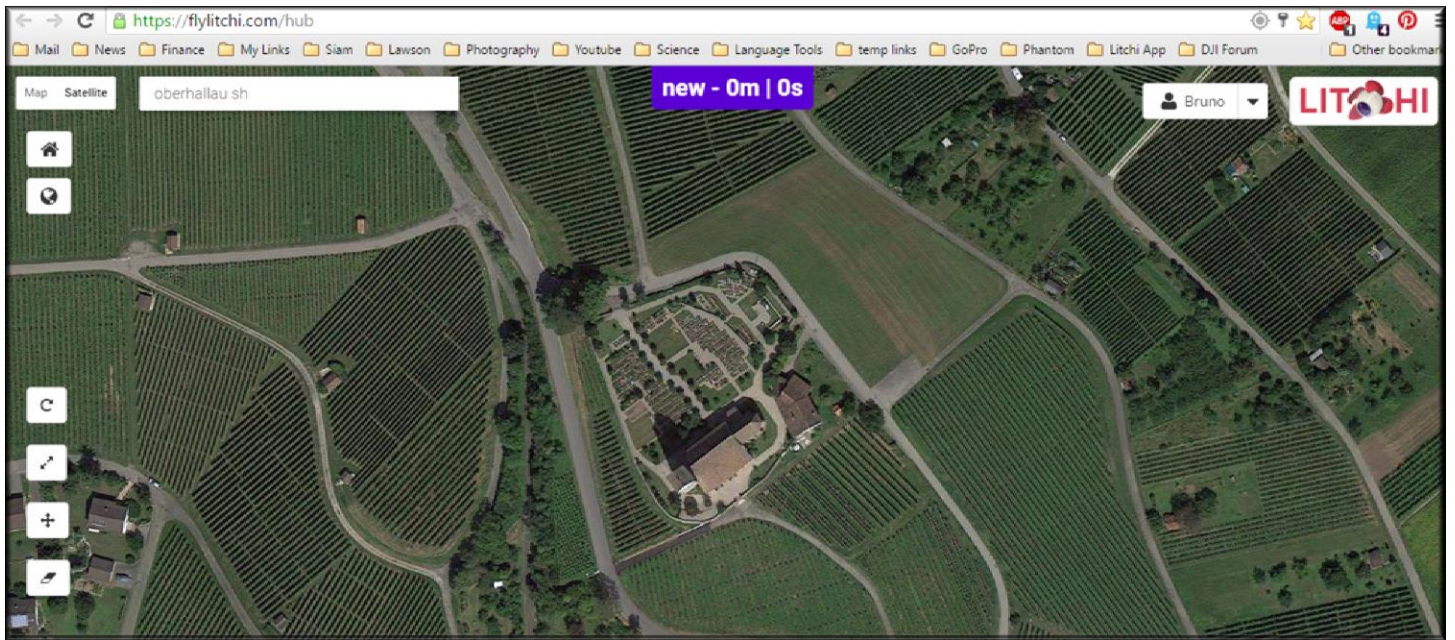




If done confirm with OK and export project



Switch to Litchi Hub and sign in to your account:



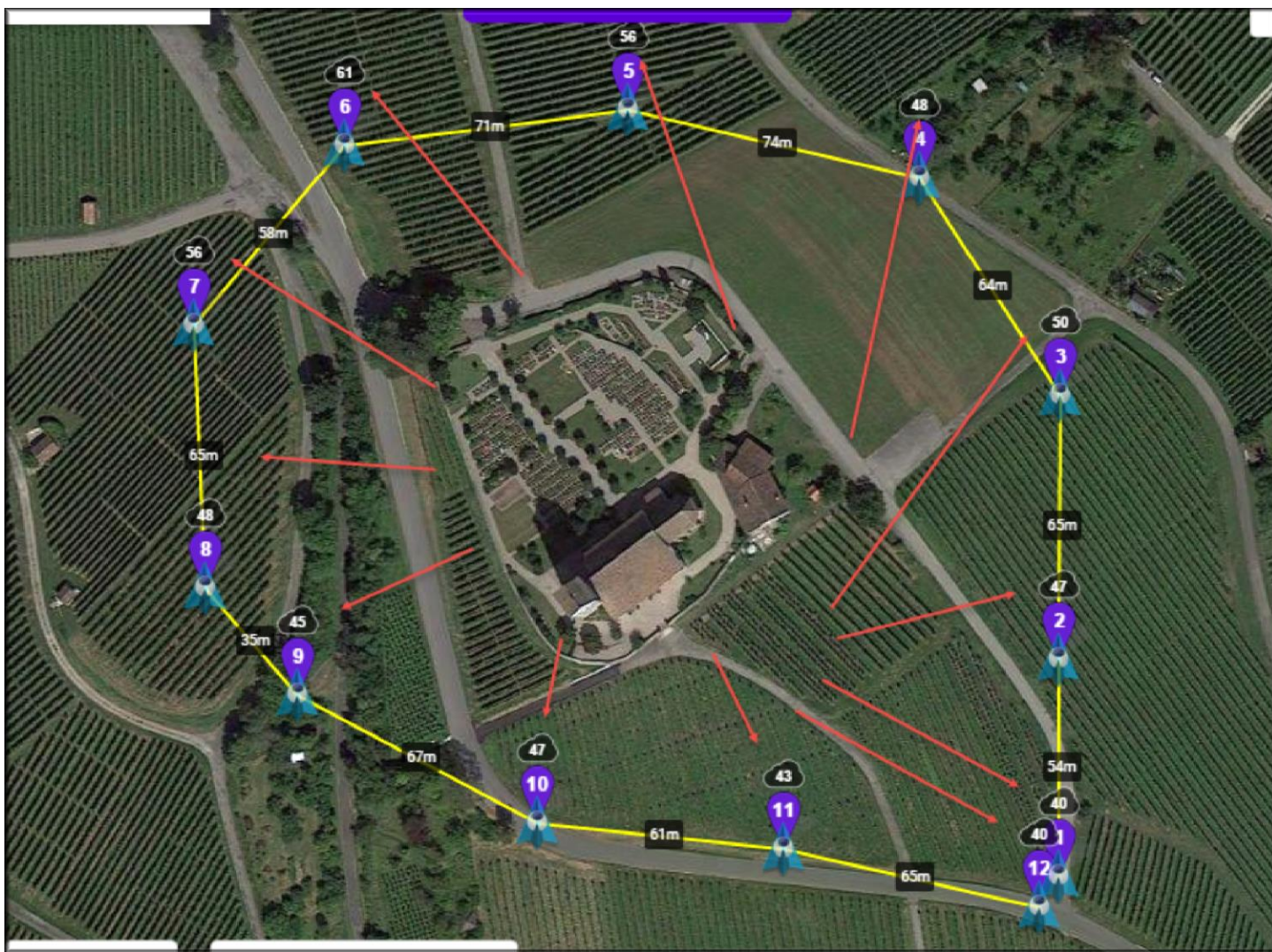
Import ✕

Bergkirche Hallau.kml

Accepted formats:

- CSV (lat,lng[,altitude(m/ft),heading(°),curve(m/ft),rotationdir,gimbalmode,gimbalangle,actiontypeX,actionparamX,...])
- KML

Import to new mission



Now adjust whatever settings you want to have adjusted, e.g. speed, change gimbal movements and actions if required, set POI's for smooth camera movements etc.

To see the elevation profile in Google Earth right-click path name:

