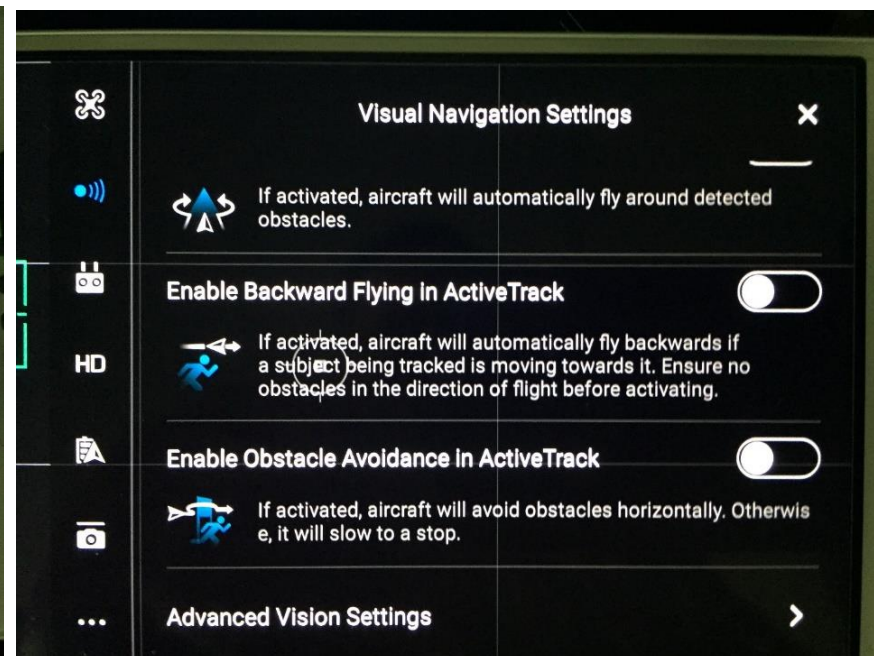
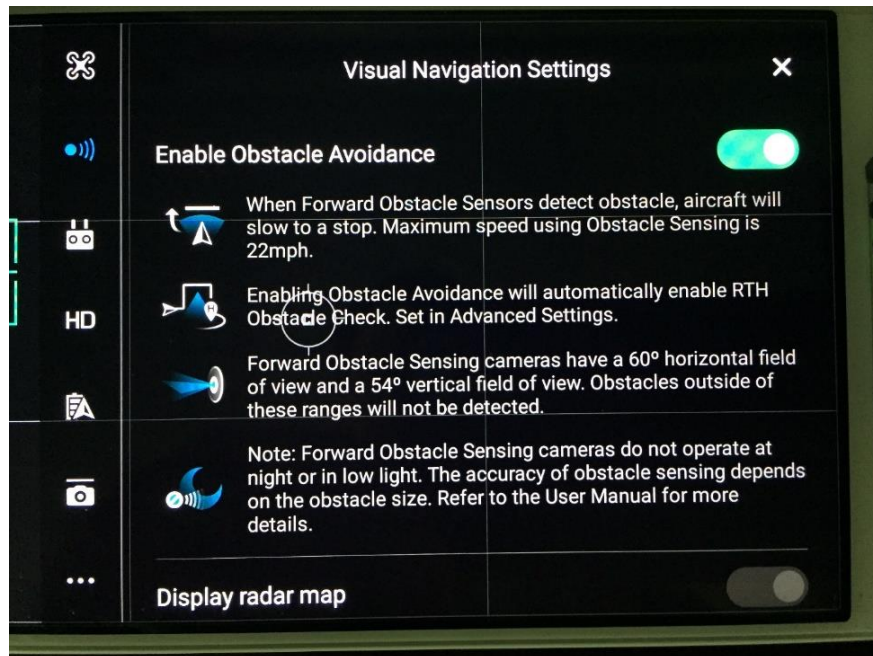


## 1. MC SETTINGS (four arrow icon)

- Home Point Settings
- Return to Home Altitude
- Enable Multiple Flight Modes
- Beginner Mode
- Maximum Altitude
- Distant Limit
- Advanced Settings – EXP-SENSITIVITY-GAIN



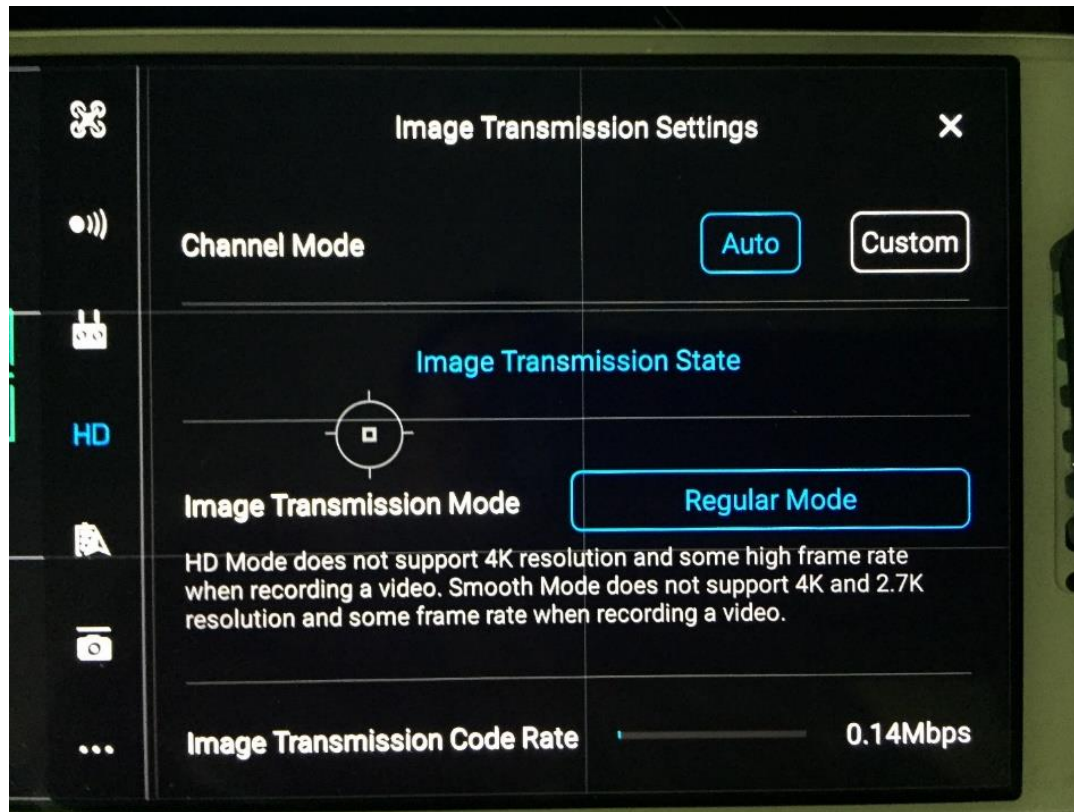
## 2. VISUAL NAVIGATION SETTINGS (wireless icon)

- Enable Obstacle Avoidance
- Enable Horizontal Obstacle Avoidance in TapFly
- Enable Backward Flying in ActiveTrack
- Enable Distance Avoidance in Active Track
- Advance Vision Settings
  - Enable Downard Vision Protection
  - Landing Protection - **On**
  - Precision landing - **On**
  - Turn on Smart Return Home - **On**



### 3. REMOTE CONTROLLER SETTINGS (controller icon)

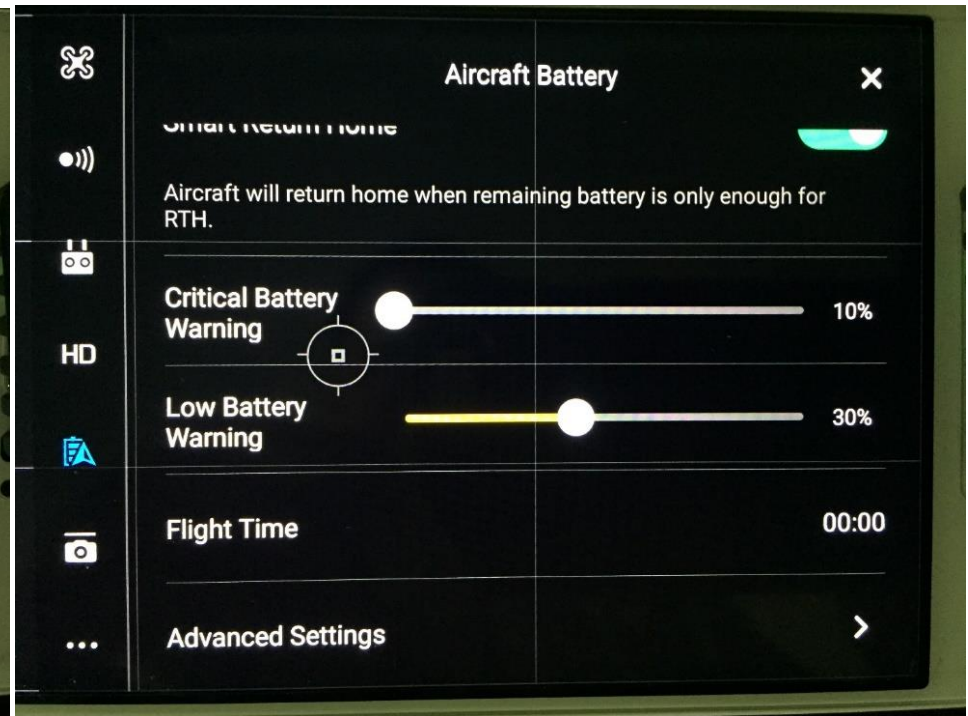
- Remote Controller Settings
- Configure Fixed Wing Mode
- Remote LCD Screen
- Stick Mode
- Button Customization
- SD Button Customization
- Linking RC



#### 4. IMAGE TRANSMISSION SETTINGS (HD icon)

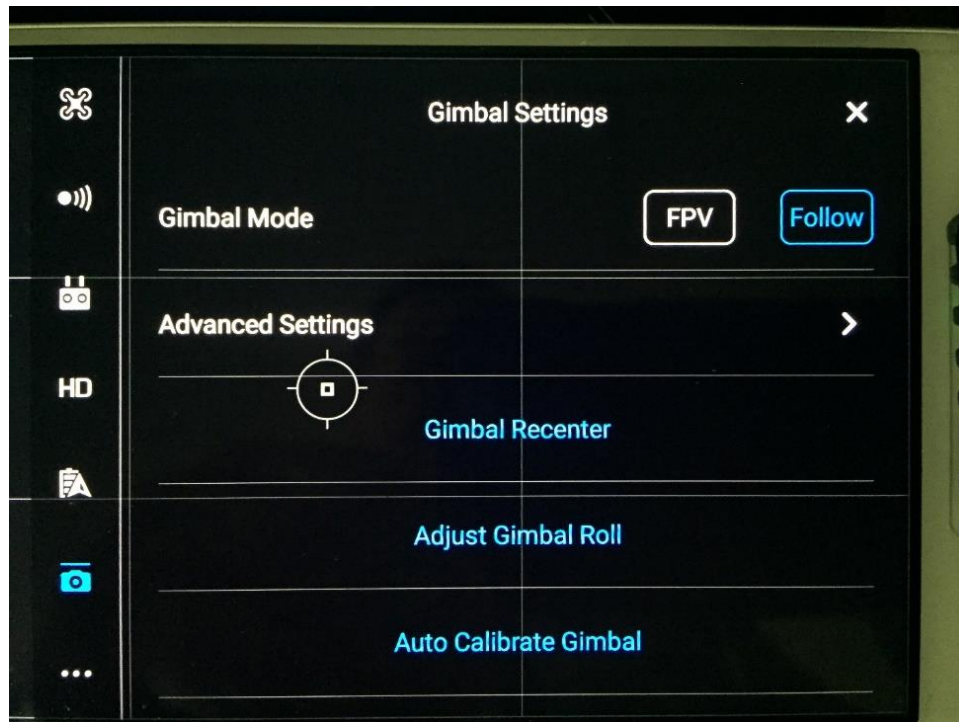
- Channel Mode
- Image Transmission Mode
- Image Transmission Code Rate





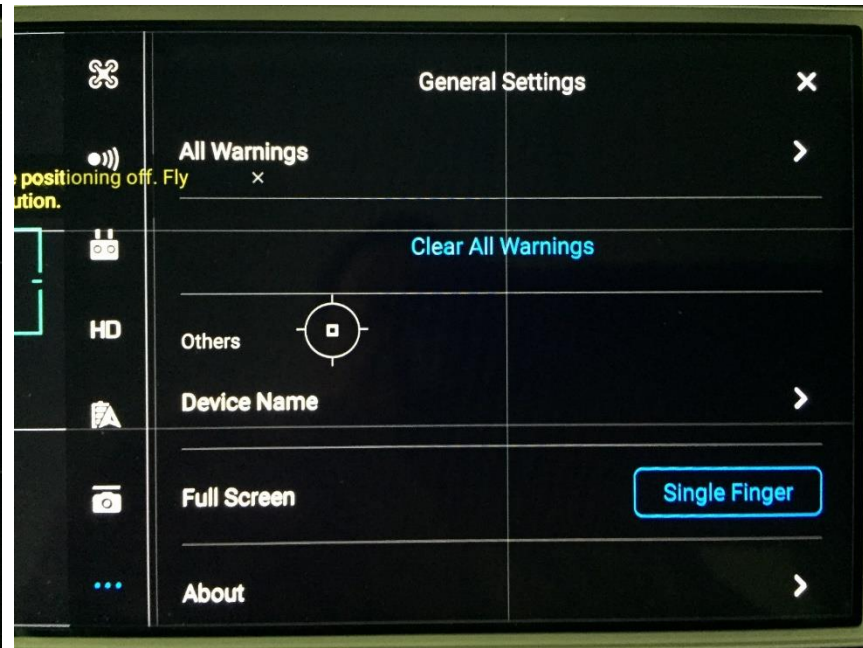
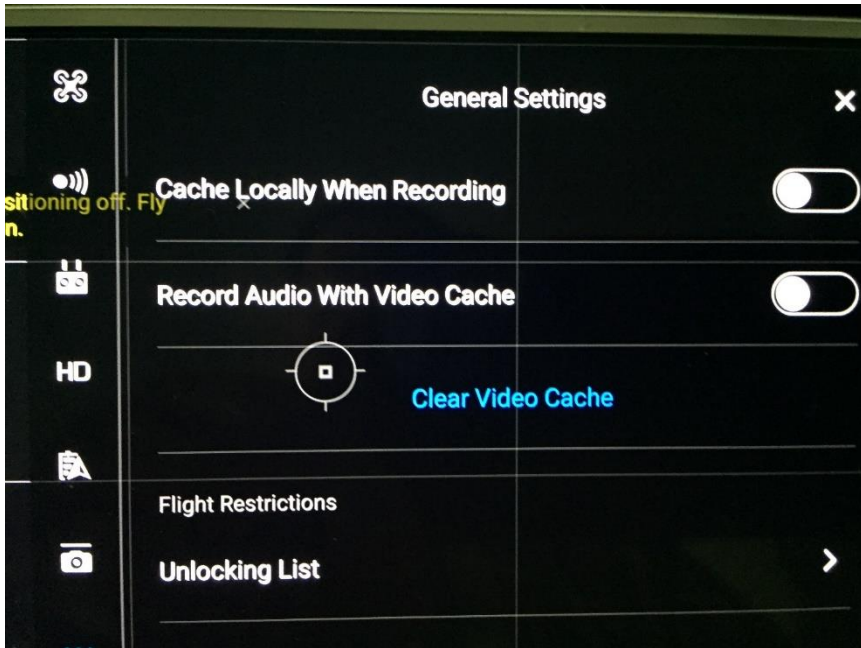
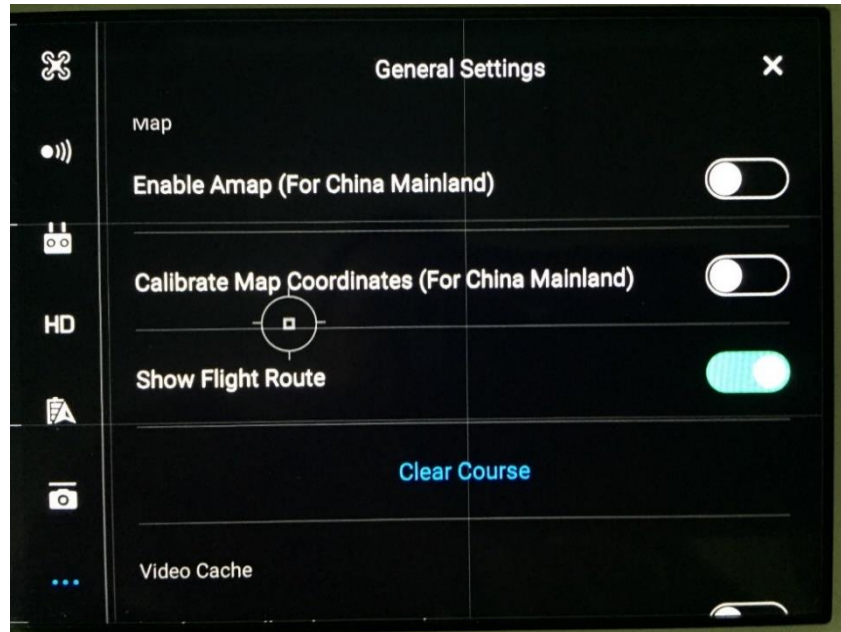
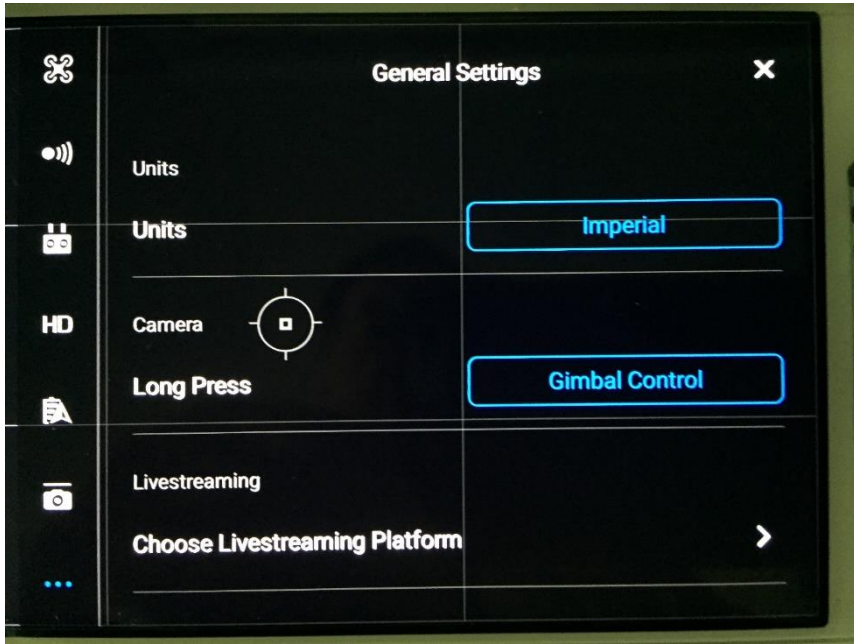
## 5. AIRCRAFT BATTERY (Battery icon)

- Smart Return Home
- Critical Battery Warning
- Low Battery Warning
- Flight Time
- Advanced Settings
  - Show Voltage on Main Screen
  - Time to discharge
  - Details



## 6. GIMBAL SETTINGS (Camera icon)

- Gimbal Mode (FPV or **Follow**)
- Advanced Settings
  - Gimbal Re-center
  - Adjust Gimbal Roll
  - Auto Calibrate Gimbal



## 7. GENERAL SETTINGS (3 dots)

- Units (*Imperial-Metric(m/s)-Metric(km/h)*)
- Long Press (*Gimbal Control – Focusing*)
- Choose Livestreaming Platform (*Facebook, YouTube, Weibo, Custom*)
- Enable Amap (for China Mainland)
- Calibrate Map Coordination (for China Mainland)
- Show Flight Route
- Cache Locally when recording
- Record Audio with video cache
- Clear Video Cache
- Unlocking list
- All warnings
- Device Name (*Your Mavic Name*)
- Full Screen
- About (*App, Version, Remote Controller, Aircraft Database, App Database, Flight Controller SN*)