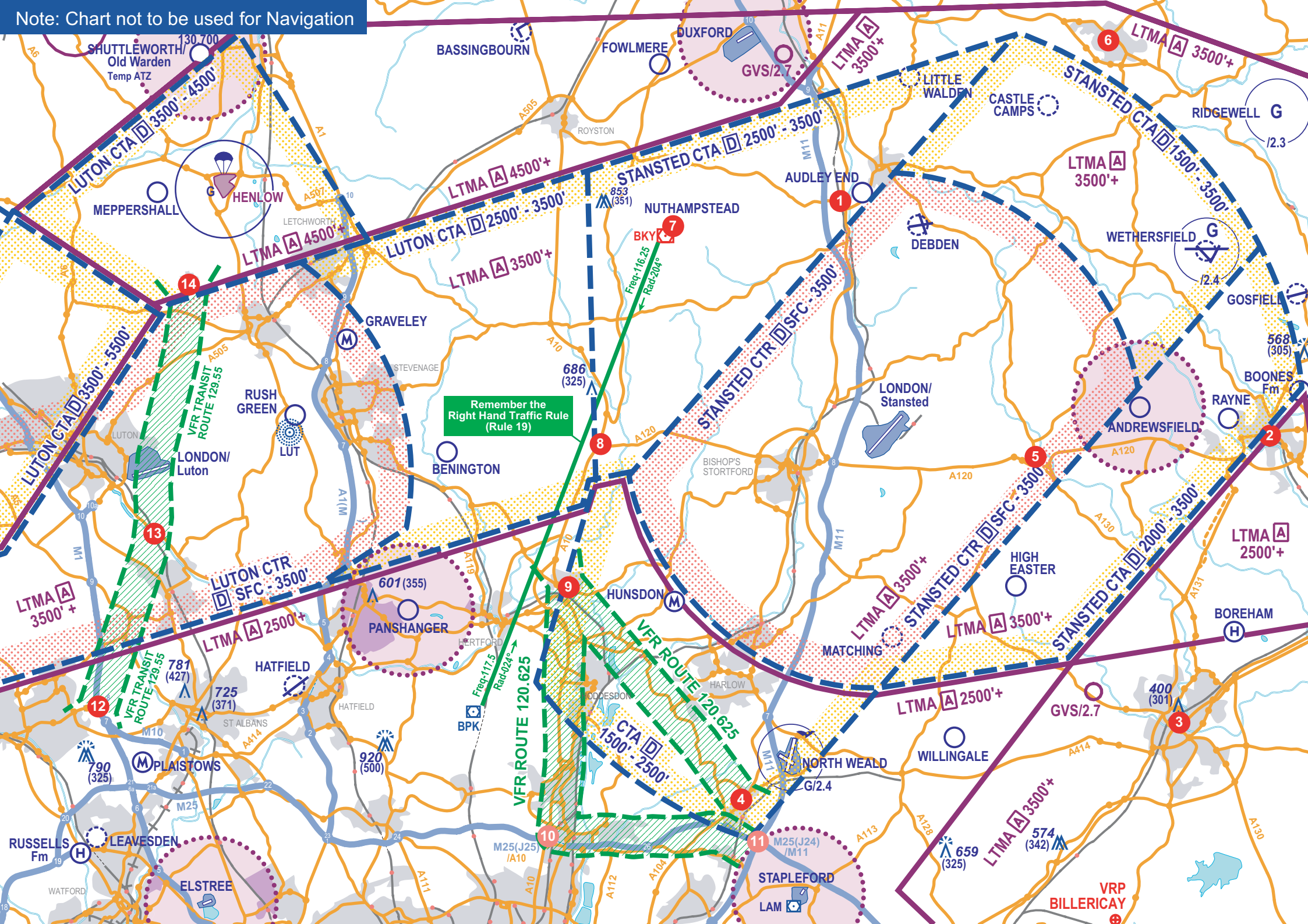


Note: Chart not to be used for Navigation



Visual Reference Point details



Name of VRP:

1. Audley End Railway Stn

GPS Co-ordinate:

5200.25N 00012.42E

Notes:

BKY VOR Freq. 116.25 - Radial 083

LAM VOR Freq. 115.60 - Radial 008

BKY VOR/DME Freq. 116.25 - Radial 083 5NM

Warnings:

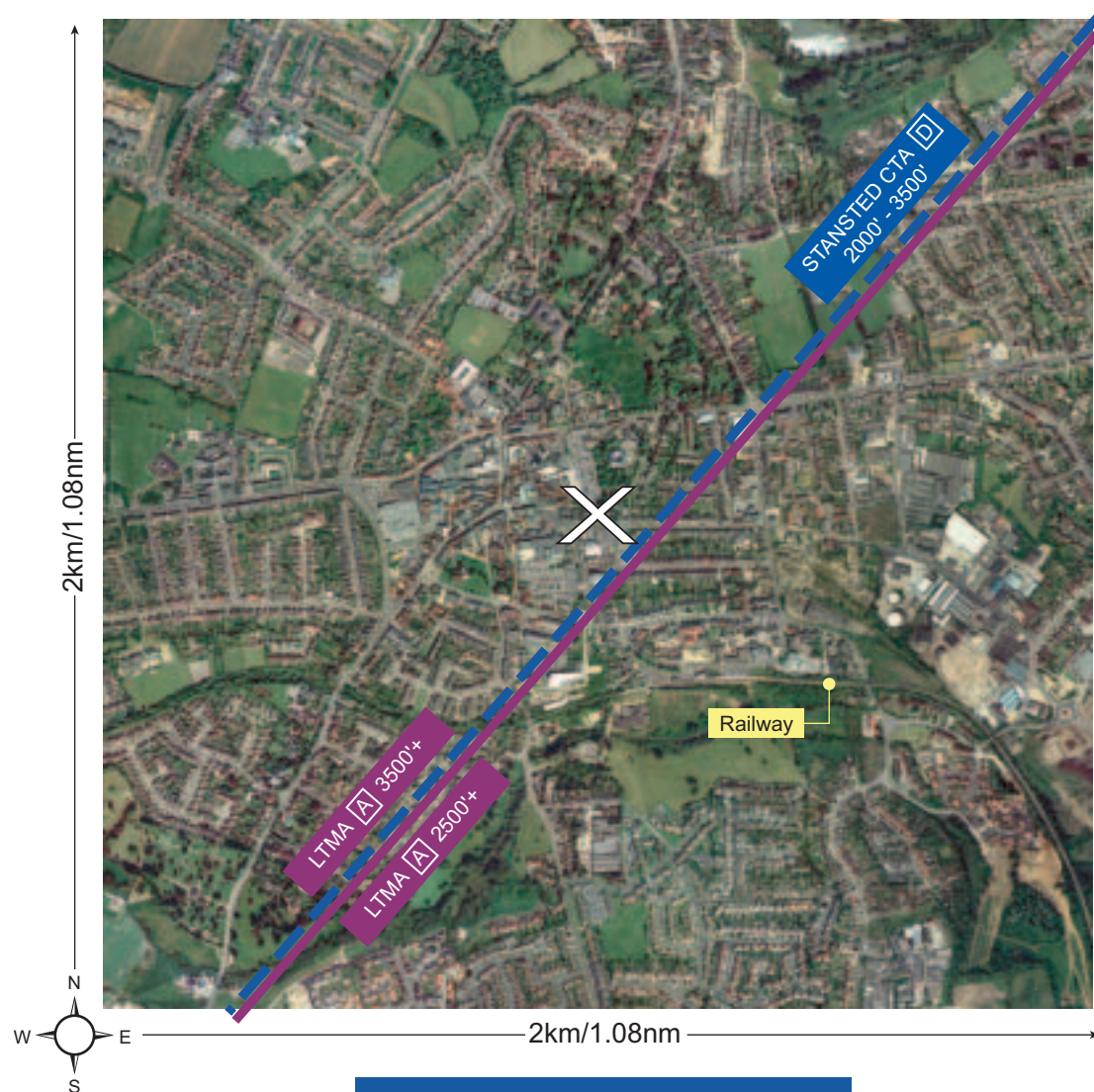
Pilots are advised not to fly directly over VRPs

Airspace:

This VRP falls beneath Stansted CTA Class D
Airspace, 2500'-3500'alt. Freq 120.625

Note: Do not use for Navigation

Visual Reference Point details



Note: Do not use for Navigation

Name of VRP:

2. Braintree

GPS Co-ordinate:

5152.70N 00033.23E

Notes:

BKY VOR Freq. 116.25 - Radial 113

LAM VOR Freq. 115.60 - Radial 049

LAM VOR/DME Freq. 115.60 - Radial 049 20NM

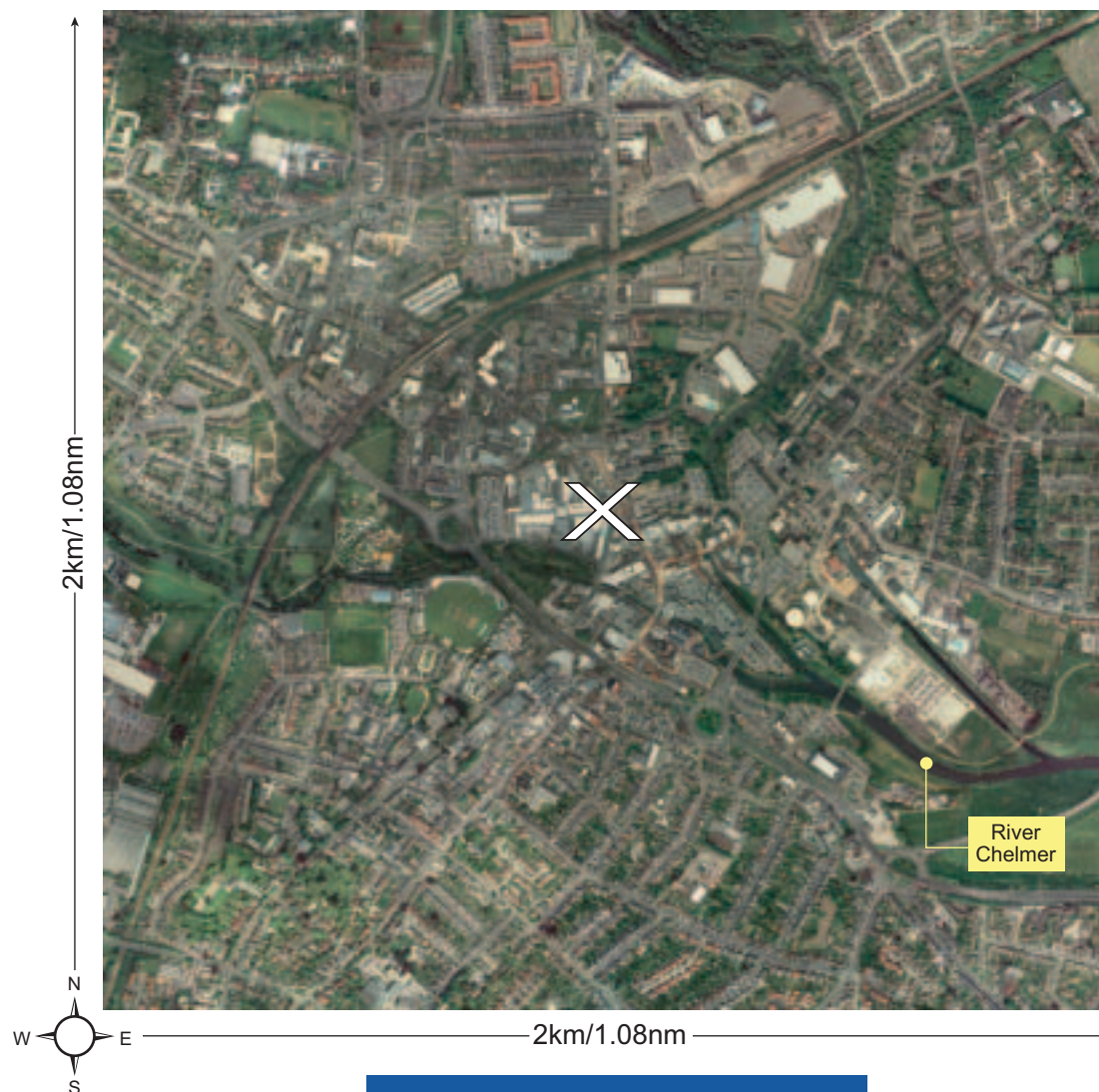
Warnings:

Pilots are advised not to fly directly over VRPs

Airspace:

VRP is on the boundary of the CTA, and falls beneath Class D Airspace 2000' - 3500'. Freq 120.625

Visual Reference Point details



Name of VRP:

3. Chelmsford

GPS Co-ordinate:

5144.00N 00028.40E

Notes:

BKY VOR Freq. 116.25 - Radial 138

LAM VOR Freq. 115.60 - Radial 069

LAM VOR/DME Freq. 115.60 - Radial 069 13NM

Warnings:

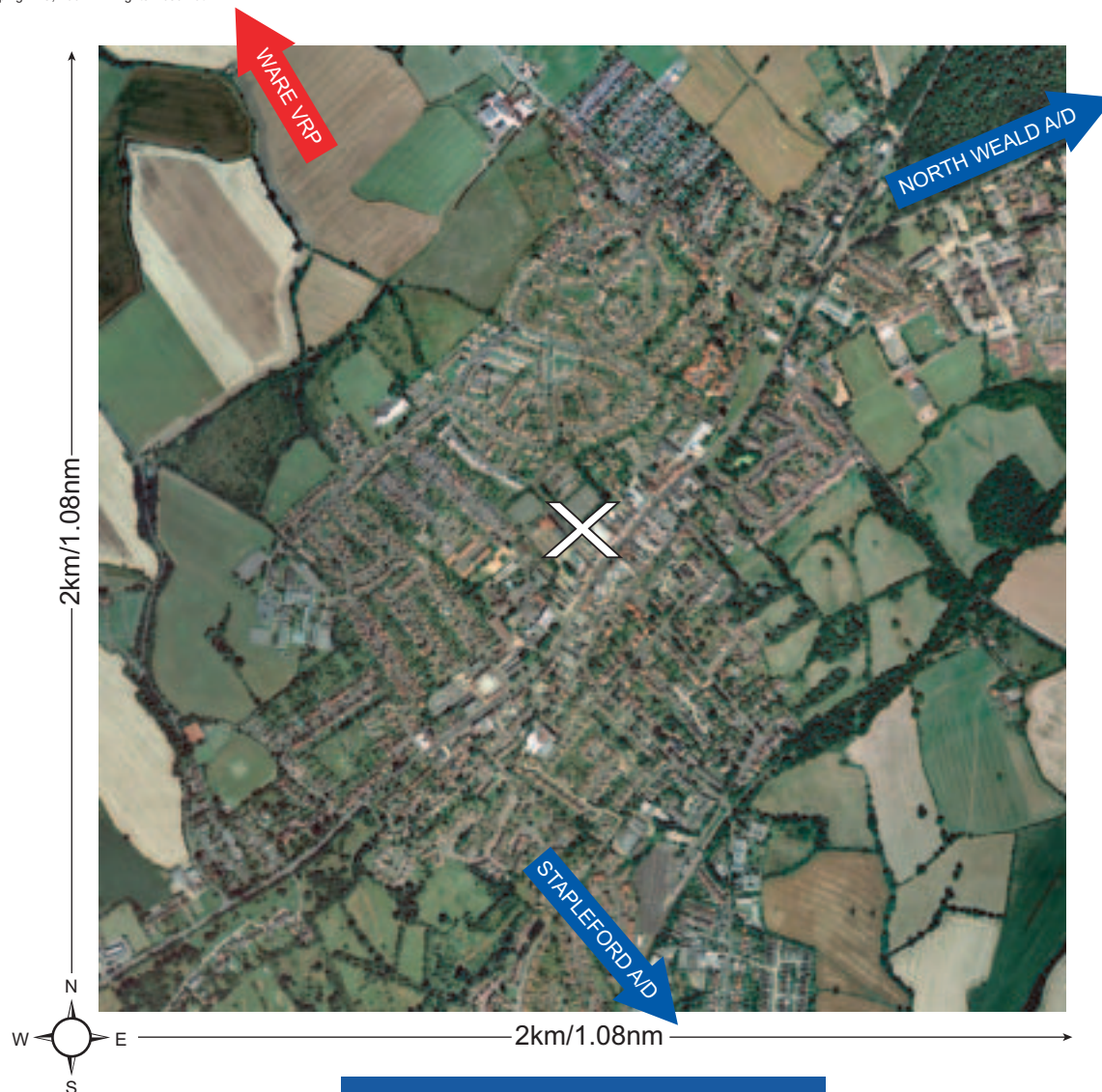
Pilots are advised not to fly directly over VRPs

Airspace:

VRP falls beneath LTMA Class A Airspace 3500'+

Note: Do not use for Navigation

Visual Reference Point details



Name of VRP:

4. Epping

GPS Co-ordinate:

5142.00N 00006.67E

Notes:

BKY VOR Freq. 116.25 - Radial 177

BNN VOR Freq. 113.75 - Radial 096

BNN VOR/DME Freq. 113.75 - Radial 096 25NM

Warnings:

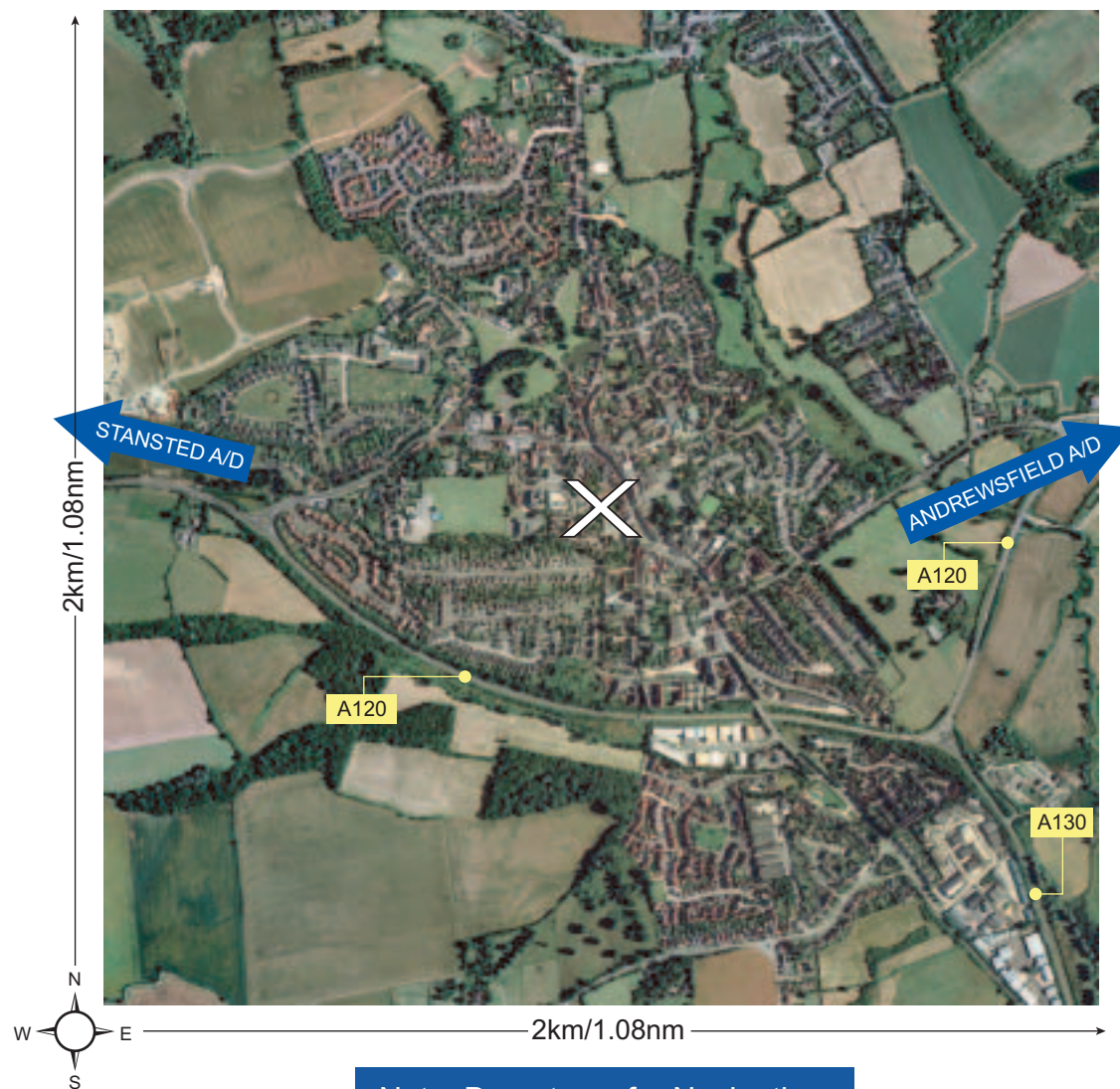
Pilots are advised not to fly directly over VRPs

Airspace:

This VRP falls beneath Stansted CTA Class D
Airspace, 1500'-2500'alt. Freq 120.625

Note: Do not use for Navigation

Visual Reference Point details



Note: Do not use for Navigation

Name of VRP:

5. Great Dunmow

GPS Co-ordinate:

5152.30N 00021.75E

Notes:

BKY VOR Freq. 116.25 - Radial 125

LAM VOR Freq. 115.60 - Radial 032

BKY VOR/DME Freq. 116.25 - Radial 125 13NM

Warnings:

Pilots are advised not to fly directly over VRPs

Airspace:

This VRP falls within Stansted CTR Class D

Airspace, SFC-3500'alt. Freq 120.625

Visual Reference Point details



Name of VRP:

6. Haverhill

GPS Co-ordinate:

5204.95N 00026.07E

Notes:

BKY VOR Freq. 116.25 - Radial 070

LAM VOR Freq. 115.60 - Radial 024

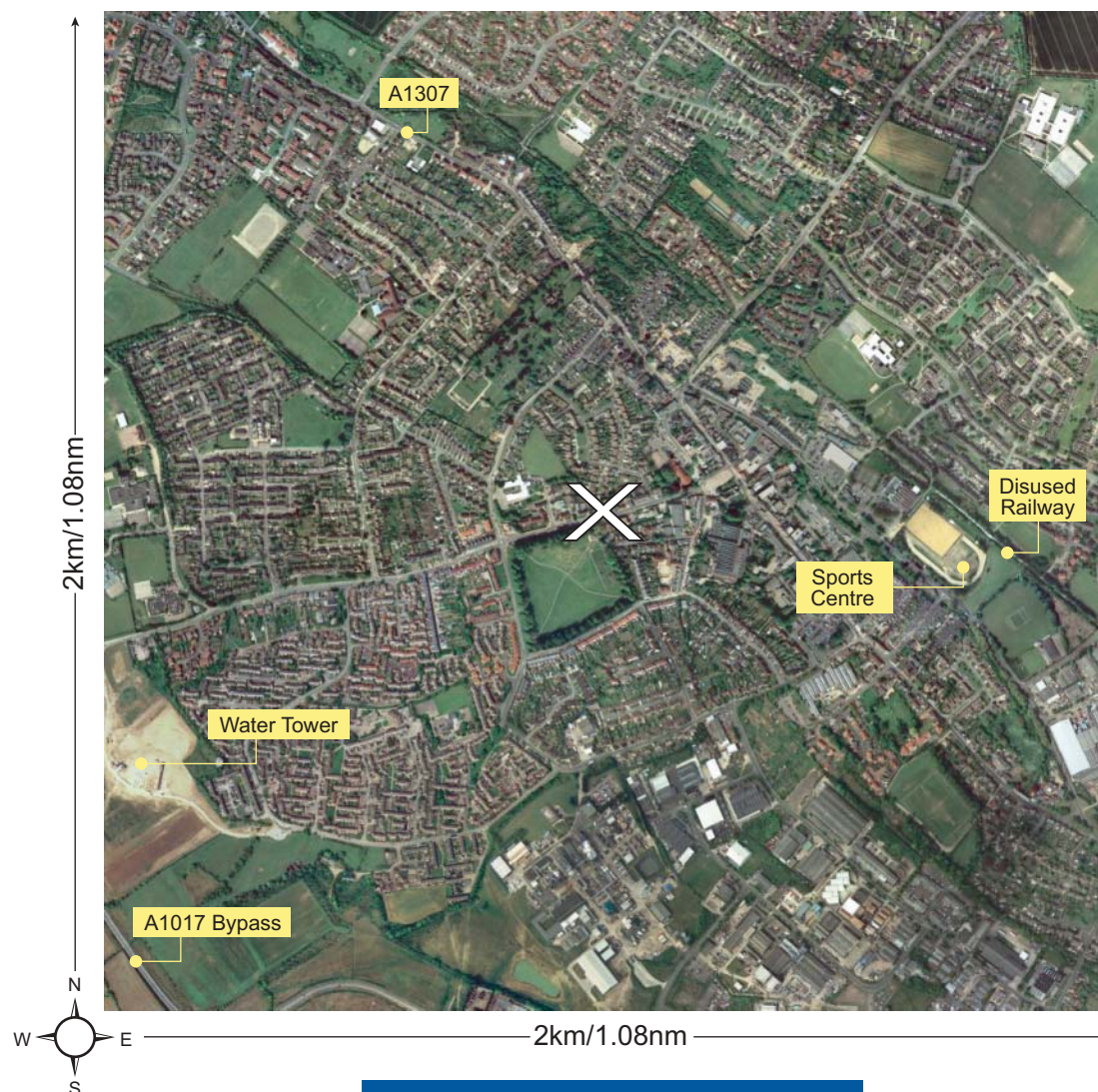
LAM VOR/DME Freq. 115.60 - Radial 024 28NM

Warnings:

Pilots are advised not to fly directly over VRPs

Airspace:

VRP falls beneath LTMA Class A 3500'+



Note: Do not use for Navigation

Visual Reference Point details



Name of VRP:

7. Nuthampstead

GPS Co-ordinate:

5159.40N 00003.72E

Notes:

BKY VOR Site

LAM VOR/DME Freq. 115.60 - Radial 353 21NM

Warnings:

Pilots are advised not to fly directly over VRPs

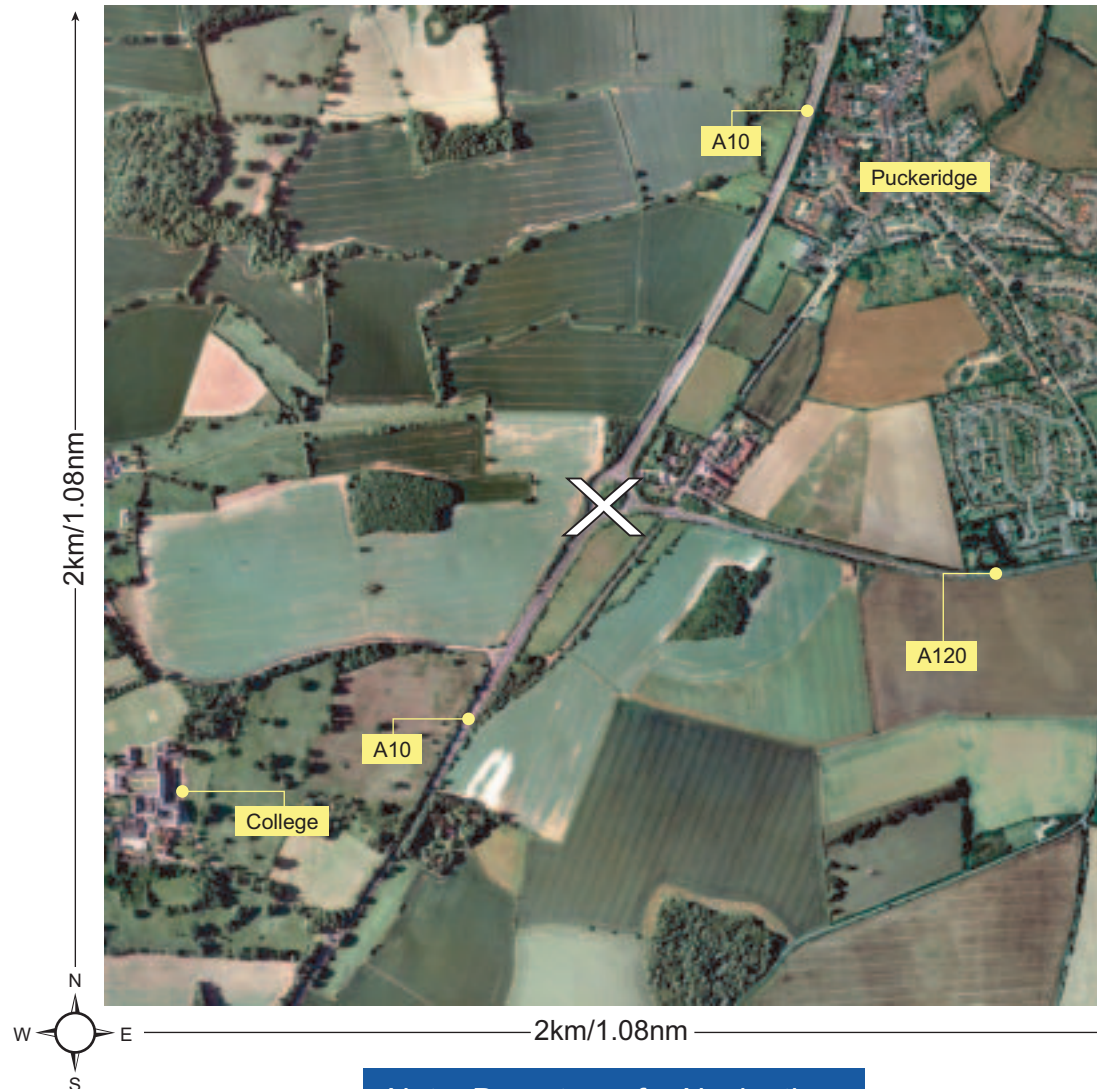
Airspace:

VRP falls beneath Stansted CTA Class D

Airspace, 2500'-3500'alt. Freq 120.625

Note: Do not use for Navigation

Visual Reference Point details



Note: Do not use for Navigation

Name of VRP:

8. Puckeridge

GPS Co-ordinate:

5153.10N 00000.27E

Notes:

BKY VOR Freq. 116.25 - Radial 201

LAM VOR Freq. 115.60 - Radial 342

BKY VOR/DME Freq. 116.25 - Radial 201 7NM

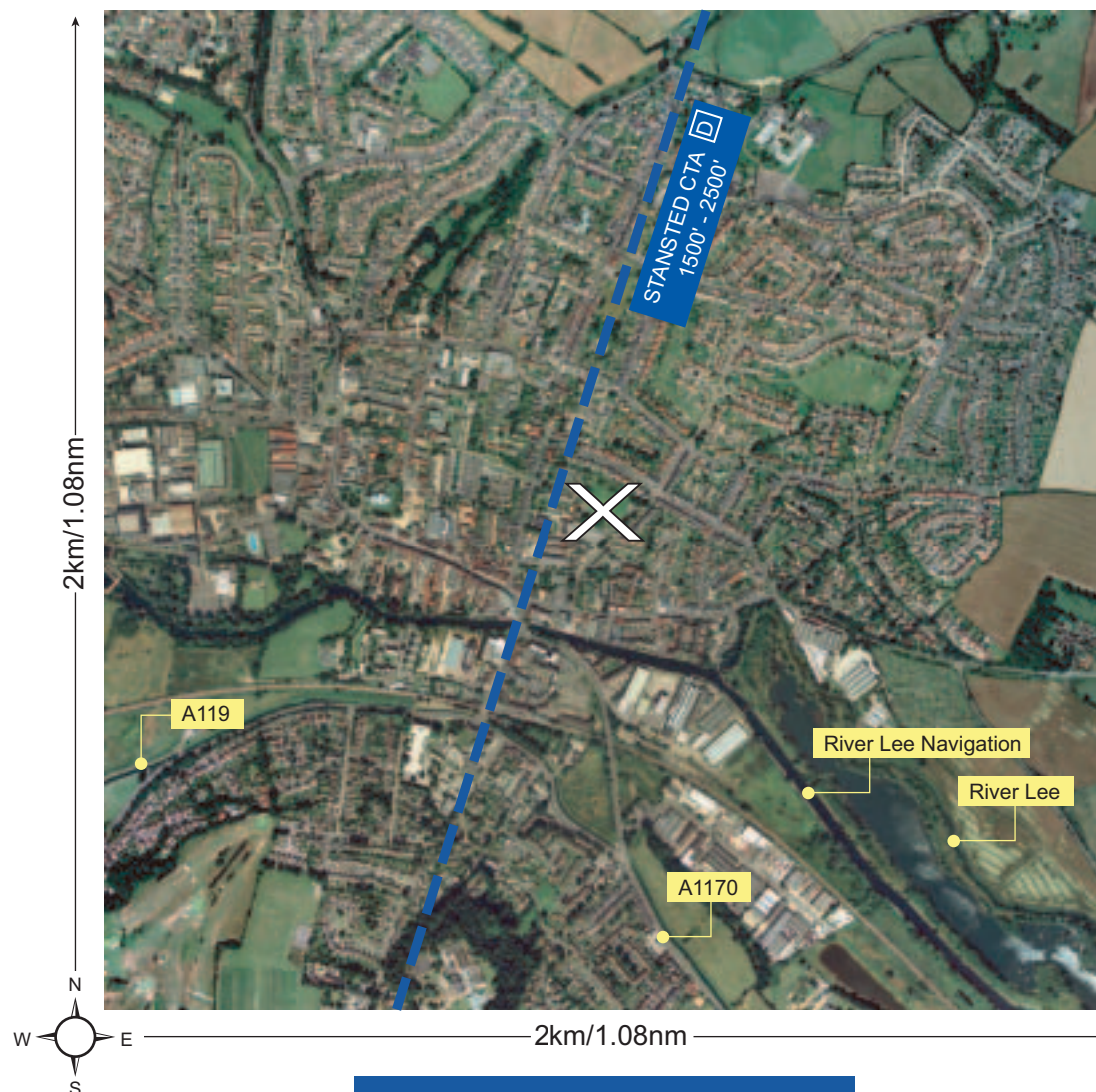
Warnings:

Pilots are advised not to fly directly over VRPs

Airspace:

This VRP falls beneath Stansted CTA Class D
Airspace, 2500'-3500'alt. Freq 120.625

Visual Reference Point details



Name of VRP:

9. Ware

GPS Co-ordinate:

5148.70N 000 01.60W

Notes:

BKY VOR Freq. 116.25 - Radial 200

LAM VOR Freq. 115.60 - Radial 329

LAM VOR/DME Freq. 115.60 - Radial 329 12NM

Warnings:

Pilots are advised not to fly directly over VRPs

Airspace:

This VRP falls on the border of the Stansted CTA Class D Airspace, 1500'-2500'alt. Freq 120.625

Note: Do not use for Navigation

Significant Visual Feature details



Name of Significant Visual Feature:

10. M25/A10 Junction

GPS Co-ordinate:

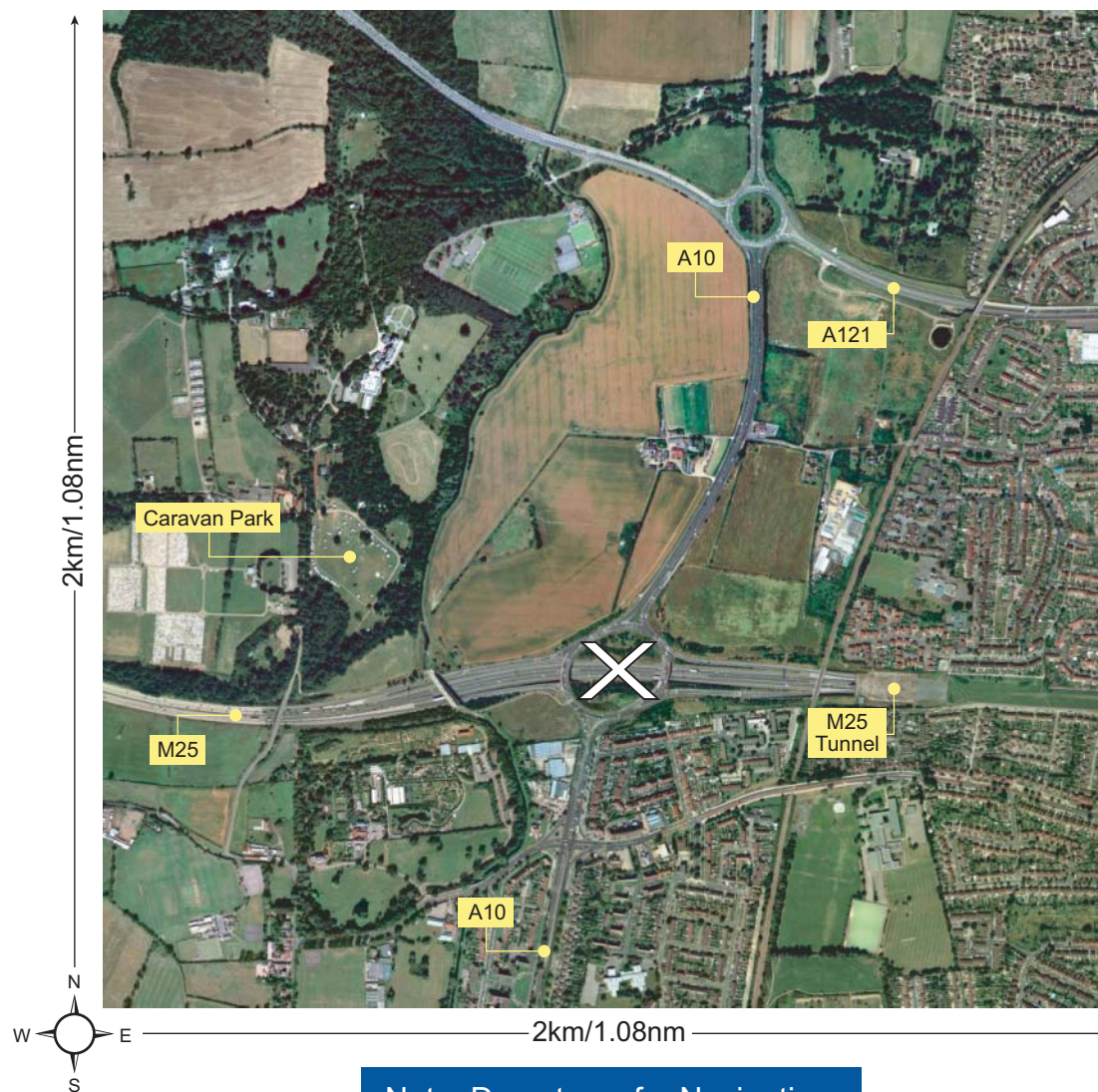
5141.16N 00002.98W

NOTE:

Though a good visual reference, this point is NOT an officially recognised CAA VRP.

Airspace:

This point falls beneath LTMA Class A Airspace 2500'+



Note: Do not use for Navigation

Significant Visual Feature details

Name of Significant Visual Feature:

11. M25/M11 Junction

GPS Co-ordinate:

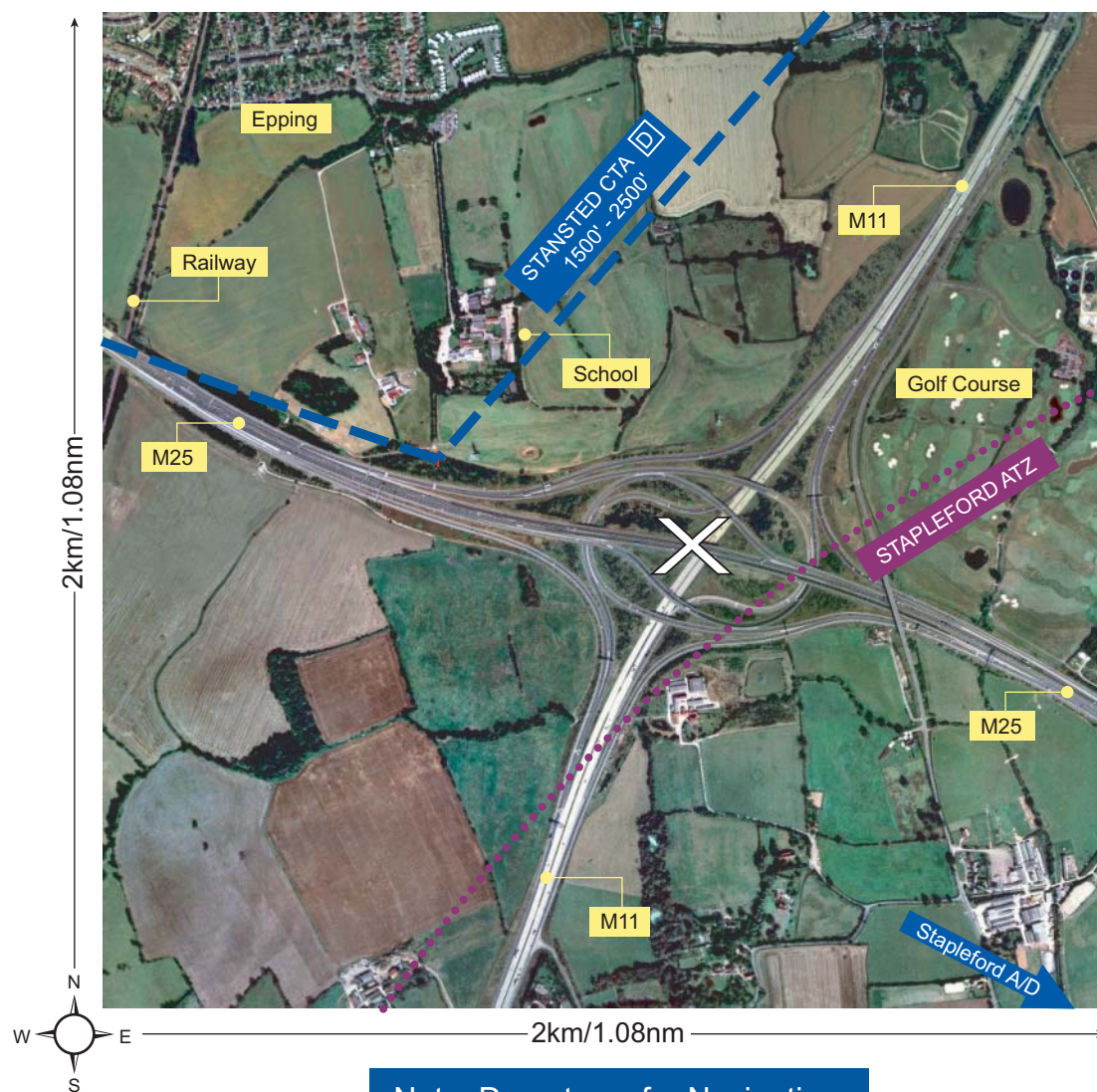
5139.15N 00009.35E

NOTE:

Though a good visual reference, this point is NOT an officially recognised CAA VRP.

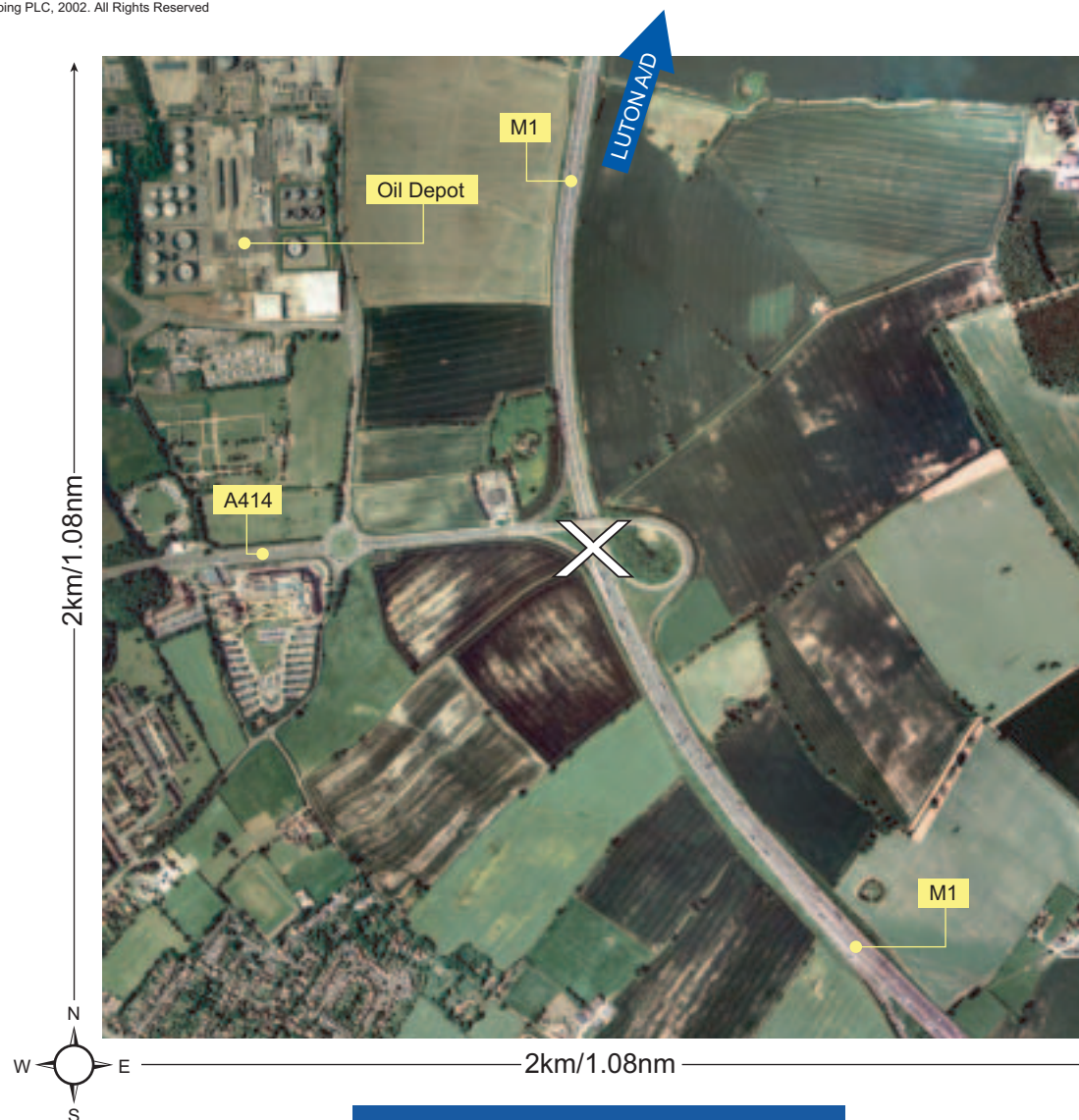
Airspace:

This point falls beneath LTMA Class A Airspace 2500'+, and on the edge of the Stapleford ATZ



Note: Do not use for Navigation

Visual Reference Point details



Name of VRP:

12. Hemel Hempstead

GPS Co-ordinate:

5145.36N 000 24.96W

Notes:

BPK VOR/DME Freq. 117.50 - Radial 274 12NM

BNN VOR/DME Freq. 113.75 - Radial 073 5NM

LUT NDB Freq. 345.00 - Radial 219 M

Warnings:

Pilots are advised not to fly directly over VRPs

Airspace:

This point falls beneath LTMA Class A Airspace
2500'+

Note: Do not use for Navigation

Visual Reference Point details



Note: Do not use for Navigation

Name of VRP:

13. Hyde

GPS Co-ordinate:

5150.65N 00021.96W

Notes:

BPK VOR/DME Freq. 117.50 - Radial 303 11NM

BNN VOR/DME Freq. 113.75 - Radial 046 10NM

LUT NDB Freq. 345.00 - Radial 237 M

Warnings:

Pilots are advised not to fly directly over VRPs

Airspace:

This point falls within Luton CTR Class D Airspace
SFC-3500'alt, freq 129.55

Visual Reference Point details



Name of VRP:

14. Pirton

GPS Co-ordinate:

5158.30M 00019.90W

Notes:

BPK VOR/DME Freq. 117.50 - Radial 330 16NM

BNN VOR/DME Freq. 113.75 - Radial 031 17NM

LUT NDB Freq. 345.00 - Radial 330 M

Warnings:

Pilots are advised not to fly directly over VRPs

Airspace:

This point is on the boundary of Luton CTR and falls beneath Luton CTA Class D Airspace 3500'-4500'alt



Note: Do not use for Navigation